

WED 1-9-08

①

P. 34 II (13)  $\left\{ \frac{7\pi}{6}, \frac{\pi}{2} \right\}$

P. 35 (9) a)  $\frac{\pi}{3}$  c)  $\frac{\pi}{6}$  e)  $\frac{3\pi}{4}$  g) 0

i)  $\frac{\pi}{6}$  k)  $\frac{\sqrt{2}}{2}$  m) IMPOSSIBLE o)  $-\frac{\pi}{3}$

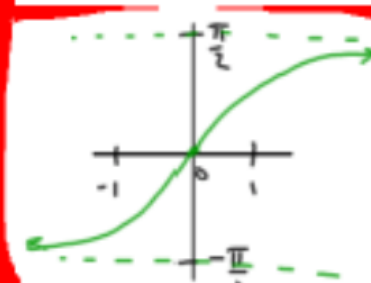
⑧



$y = \cos^{-1} x$   
 $D = \{x: -1 \leq x \leq 1\}$   
 $R = \{y: 0 \leq y \leq \pi\}$



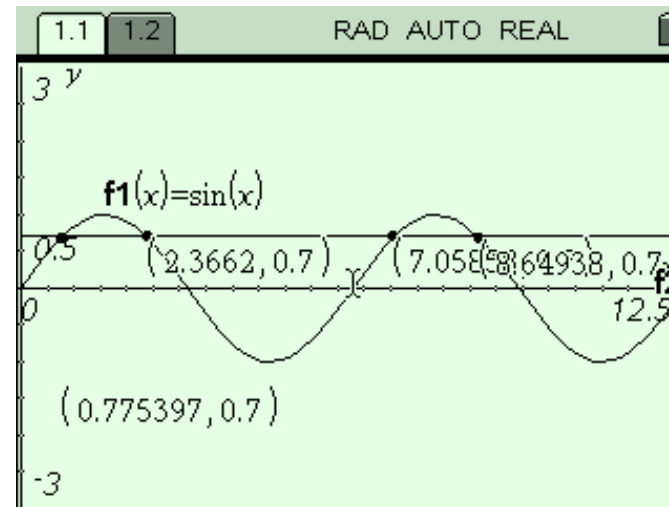
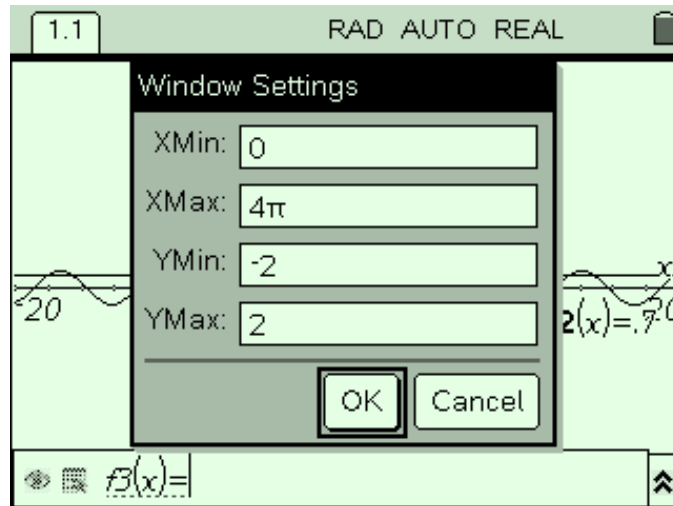
$y = \sin^{-1} x$   
 $D = \{x: -1 \leq x \leq 1\}$   
 $R = \{y: -\frac{\pi}{2} \leq y \leq \frac{\pi}{2}\}$



$y = \tan^{-1} x$   
 $D = \mathbb{R}$   
 $R = \{y: -\frac{\pi}{2} < y < \frac{\pi}{2}\}$

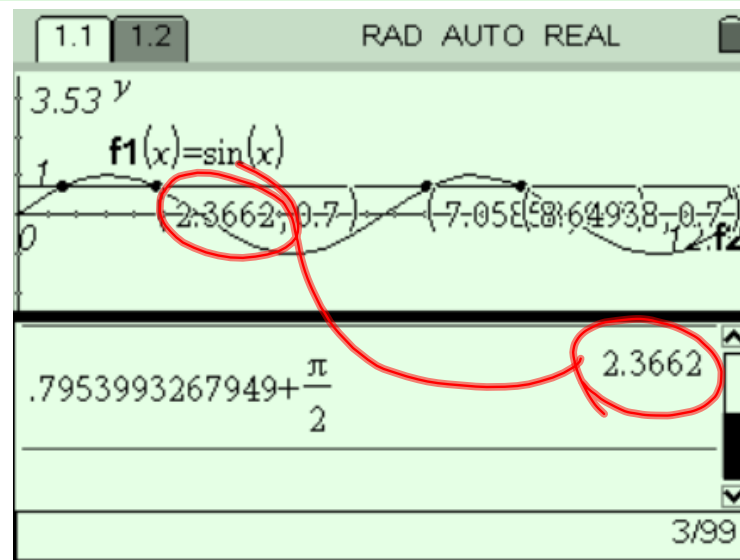
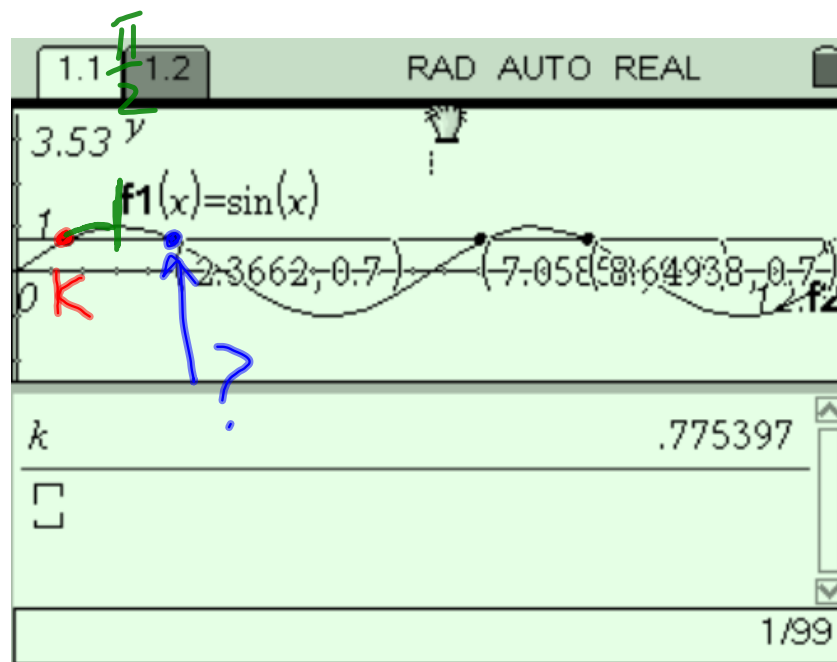
HINT FOR #4 SOLVE:  $\sin x = 0.7$

②



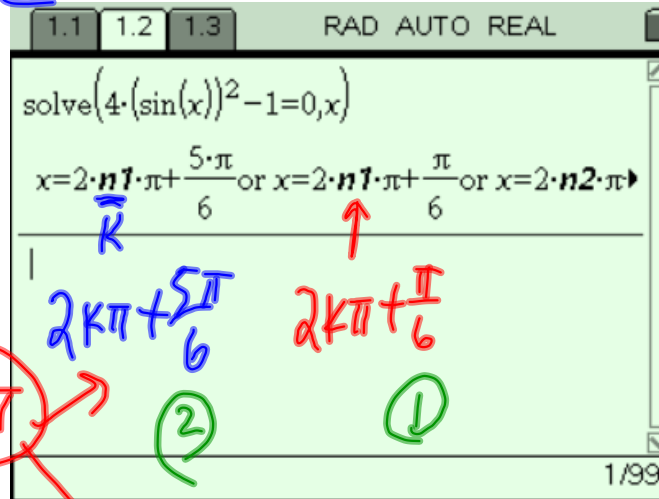
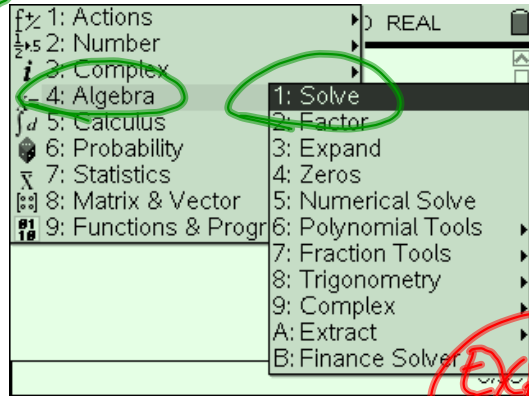
$k$	.775397
$\sin(k)$	.7
$k + 2 \cdot \pi$	7.05858

3/99

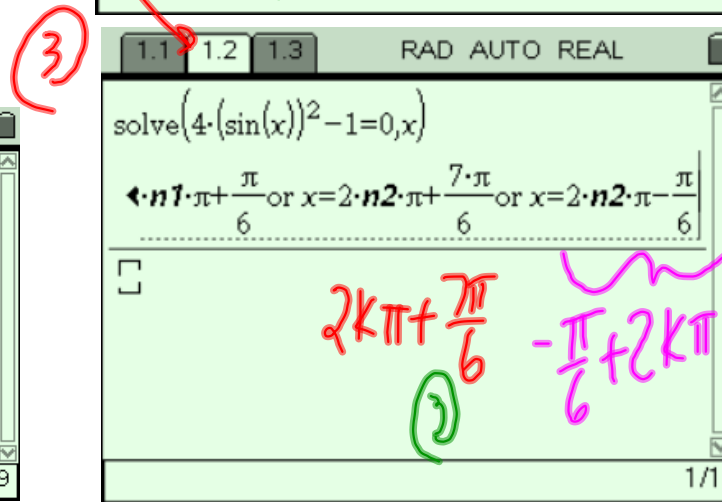
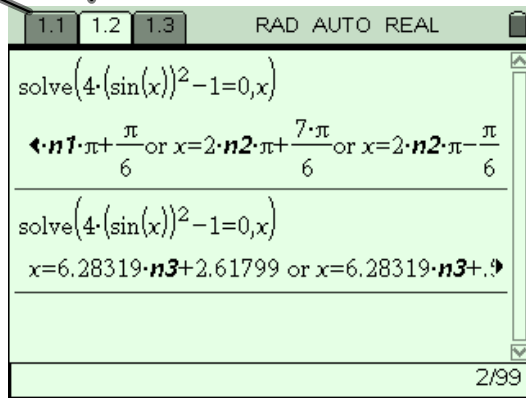


# SOLVE TRIG EQS. USING NSPIRE CAS

① II 1)  $4\sin^2 x - 1 = 0$  ②



④ APPROX:



O.T.L.?

O.T.L.

• CORRECT LAST 2  
DAYS O.T.L. TO TURN IN

P.34 II: 17, 2, 4, 6, 10, 12, 15

P.35 5, 9b, d, f, h, ...